

CIS For EPN



- ☛ Continuous ink system
- ☛ Continuous ink supply system
- ☛ Continuous ink flow system
- ☛ Continuous ink feed system
- ☛ Bulk ink system

Unpacking Instruction

- 1).Continuous ink system 1 Set 2). Pipeline Clincher or Arm Support 1 Set 3).Installation Instruction 1 Copy 4).Syringe 1 Set

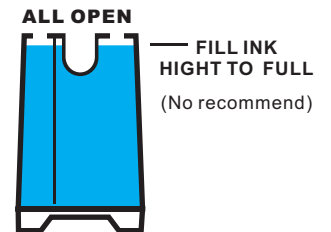
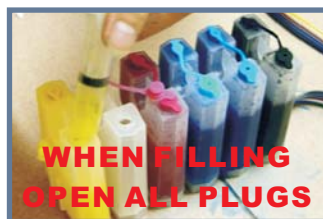
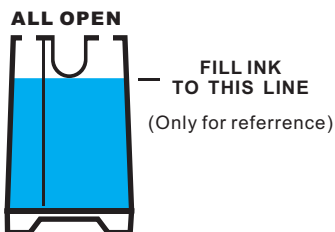
Note

1. Not drinkable, keep it out of the reach of children
2. Avoid exposure to direct sunshine and don't keep it in the high or freezing temperature.
3. Avoid collision and fallen down.
4. Please do not take out the cartridges at random after installing the CIS ink system.
5. Using it in the temperature of 10-40°C
6. The CIS ink system has passed the strict compatible checking, so we suggest to use our ink and cartridges to keep the printing quality.
7. Mix two different brand ink into the CIS ink system is not recommended.

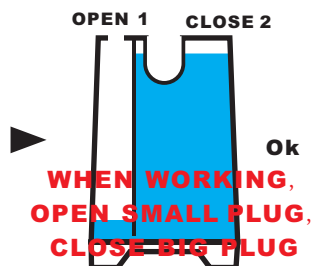
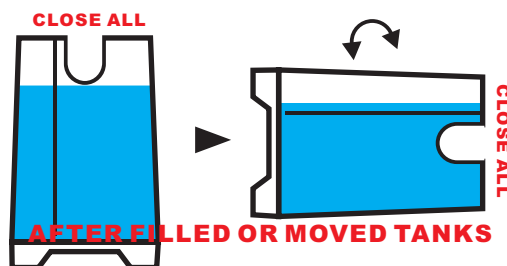
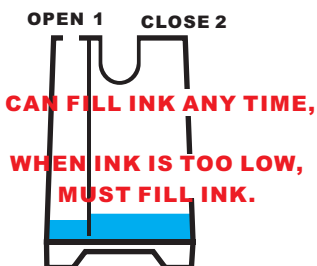
**8.Keep the ink tanks and printer in the same level. Do not place the tanks higher or lower than their printer**

Refilling ink

When filling ink , remove the rubber plug from the sprue of the ink cartridge, use a common syringe to connect to the sprue, pull the syringe piston for air-removing, the ink will then flow into the ink cartridge automatically. After filled, stuff the rubber plug.



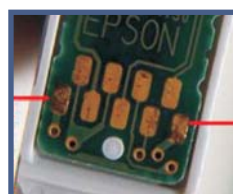
Tank working :



Insert an original cartridge



Insert the original cartridge with its chip well-contact with the spring.



Make sure the chips can be touched well with the springs.  
The springs should touch these points

- 1 Press the Power Button When the cartridge moves, pull out the power cord.. ▲



- 2 Open the carriage cover to certain angle (about 60 degree). Then use a screwdriver to insert into the joint as the picture shows. Turn the screwdriver clockwise and lift the cover and then it can be removed. Make the right side of the cover separate with the carriage.



- 3 Take out the original carts. Move the carriage to the left side. Insert the CISS cartridge in the same way as the picture shows. Move the carriage to its original place. Then install the CISS carts well.

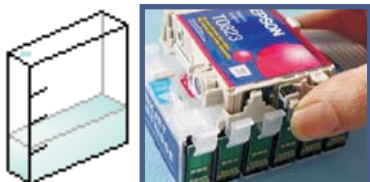


- 4 Stick the support arm in the place as the picture shows. Then stick another support arm over the first one. Stick the short support arm parallelly as the above picture shows.

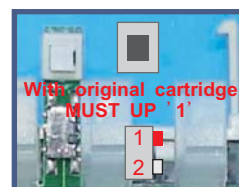


- 5 Clip the tube. Move the carriage to the rightmost and make sure that the tube can be straight. Installation is finished.

Reset cartridges:



The ink will be showed less and less when printing, as the original cartridges. At last, the computer will tell you to replace cartridge doesn't work. **Keep the power, open the cover of printer, do not need to remove the CIS cartridges**, then press the switch on the cartridge stand for 2 time(or 3 seconds), restart 2 times ok. Some version cartridges are 2 switches design, when need not original cartridge, place '2' position. When '1' position, must need original cartridge





Tubes swerve

C79/C90/C91/C92/D78/D92



R270/R260/R265/R390/RX590/RX580/RX595/RX680



R280/R285/R290/R380



C110/C120/D120



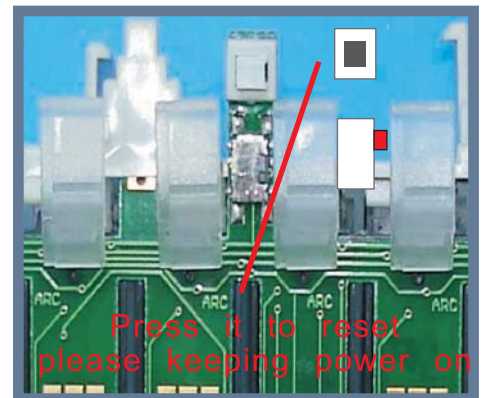
CX3900/CX4900/CX5500/CX5600/CX5900/  
CX7300/CX8300/CX7400/CX5505/DX4400/DX7400



1390/1400/1410



Attention for printer hardware updated



EPN company combat compatible cartridge companies, and continuously upgrade the printer hardware (the same type of printers have different versions of the hardware), it like WINDOWS SYSTEM same.

As a compatible cartridge manufacturer, as allowed by the law , we have continued to improve our products to fit the printer's version. Therefore, we do not guarantee that the CIS products on your hands are support the latest printers, but we guarantee our CIS products for production suitable printer.