



For Epson All In One printers

- CX series printers
- DX series printers

- Continuous ink system
- Continuous ink supply system
- Continuous ink flow system
- Continuous ink feed system
- Bulk ink system

Unpacking Instruction

- 1).Continuous ink system 1 Set 2). Pipeline Clincher or Arm Support 1 Set 3).Installation Instruction 1 Copy 4).Syringe 1 Set

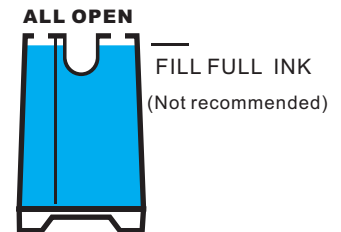
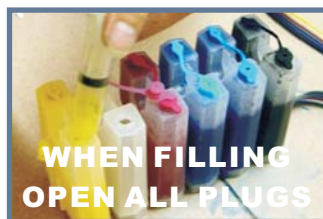
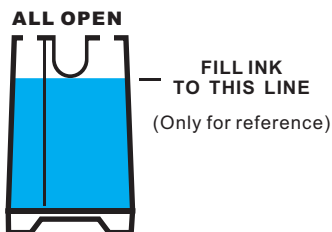
Note

1. Not drinkable, keep it out of the reach of children
2. Avoid exposure to direct sunshine and don't keep it at the high or freezing temperature.
3. Avoid collision and falling down.
4. Please do not take out the cartridges at random after installing the CIS ink system.
5. Using it in the temperature of 10-40°C
6. The CIS ink system has passed the strict compatible checking, so we suggest using our ink and cartridges to keep the printing quality.
7. Mixing two different brand inks into the CIS ink system is not recommended.

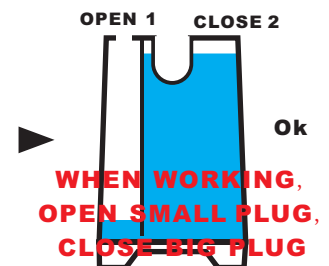
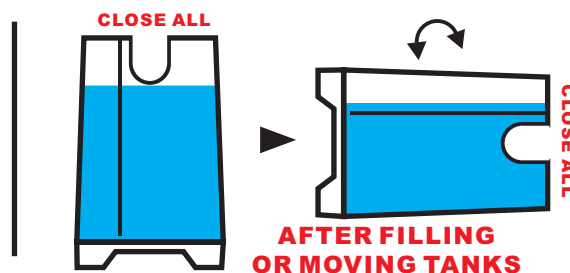
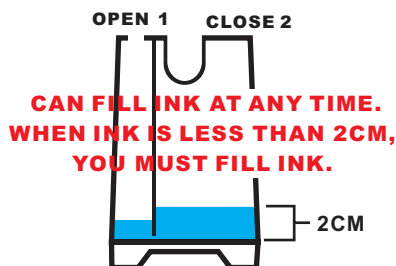
8. Keep the ink tanks and printer in the same level. Do not place the tanks higher or lower than their printer

Refilling ink

When filling ink , you should pull out the rubber plugs from the sprue of the ink cartridge, use a common syringe to connect to the sprue, pull the syringe piston for air-removing, the inks will then flow into the ink cartridge automatically. After filling, stuff the rubber



Tank working

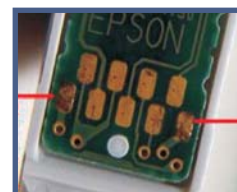


Insert an original cartridge (when need)

In general time, this ink system do not need an original cartridge when works.



If you face printer version problem, please notice as below.
Insert the original cartridge with its chip well-contact with the spring.



Make sure the chips can be touched well with the springs.
The springs should touch these points

- 1 Press the Power Button When the cartridge moves, pull out the power cord.. ▲



- 2 Open the carriage cover to certain angle (about 60 degrees). Then use a screwdriver to insert into the joint as the picture shows. Turn the screwdriver clockwise and lift the cover and then it can be removed. Make the right side of the cover separate with the carriage.



- 3 Take out the original carts. Move the carriage to the left side. Insert the CISS cartridge in the same way as the picture shows. Move the carriage to its original place. Then install the CISS carts well.

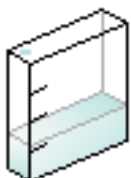


- 4 Stick the support arm in the place as the picture shows. Stick the short support arm parallelly as the above picture shows.

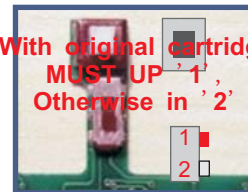


- 5 Clip the pipelines. Move the carriage to the rightmost and make sure that the pipelines can be straight. Installation is finished.

Reset cartridges:



The ink will be showed less and less when printing, as the original cartridges. At last ,the computer will tell you to replace cartridge . **Keep the power, open the cover of printer, do not need to remove the CIS cartridges** , then press the button on the cartridge for 1 times, and restart the printer for 1 times , ok.



With original cartridge MUST UP '1', Otherwise in '2'

When do not use the original cartridge, place in '2' position. When in '1' position, must use a brand new original cartridge.