



- For EPN
- R260/R265/R270/R360/R390
  - /RX590/RX580/RX595/RX680

- Continuous ink system
- Continuous ink supply system
- Continuous ink flow system
- Continuous ink feed system
- Bulk ink system

Unpacking Instruction

- 1).Continuous ink system 1 Set 2). Pipeline Clincher or Arm Support 1 Set 3).Installation Instruction 1 Copy 4).Syringe 1 Set

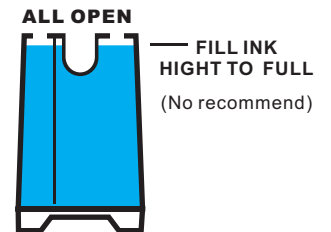
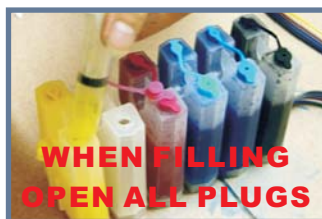
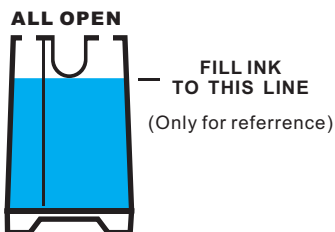
Notice

1. Not drinkable, keep it out of the reach of children
2. Avoid exposure to direct sunshine and don't keep it in the high or freezing temperature.
3. Avoid collision and fallen down.
4. Please do not take out the cartridges at random after installing the CIS ink system.
5. Using it in the temperature of 10-40°C
6. The CIS ink system has passed the strict compatible checking, so we suggest to use our ink and cartridges to keep the printing quality.
7. Mix two different brand ink into the CIS ink system is not recommended.

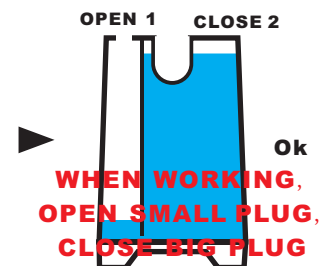
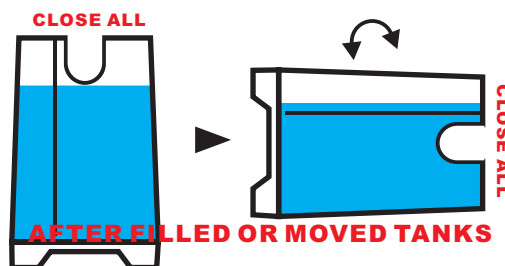
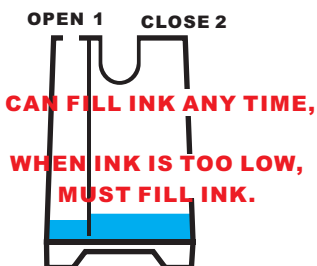
**8.Keep the ink tanks and printer in the same level. Do not place the tanks higher or lower than their printer**

Refilling ink

When filling ink , remove the rubber plug from the sprue of the ink cartridge, use a common syringe to connect to the sprue, pull the syringe piston for air-removing, the ink will then flow into the ink cartridge automatically. After filled, stuff the rubber plug.



Tank working :

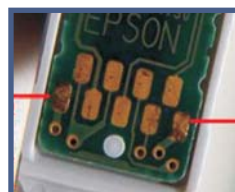


Insert an original cartridge(when need)



If your CIS need an original cartridge, please notice as below.

Insert the original cartridge with its chip well-contact with the spring.



Make sure the chips can be touched well with the springs.

The springs should touch these points

- 1 Remove ink cartridge holder lid and previous ink cartridges  
With printer powered on, press the 'change cartridge' button.  
When ink cartridge holder is in the 'change' position, remove the power cord from the printer.



- 2 Place flat-edged screwdriver into the slit of the retaining clip marked 'EP logo'. Push down slowly until clip disengages and remove clip.  
Remove the lid, then remove all prior ink cartridges  
Printer is now ready for installation of the CIS ink System



- 3 Install CIS ink System ink component  
Manually move ink cartridge holder to the left.  
Install the CISS system component into the left side of the printer frame, through the frame divider and place it to the right of printer as shown above.  
Move ink cartridge holder back to original 'change' cartridge position



- 4 Looking into the printer from above, install support clip as shown, affixing it at the edge of the white metal strip.  
Install the second support clip at a 30 degree angle on the front of printer, to the right of the operation buttons.



- 5 Twist tubing to a 90 degree angle running the length of the carriage, turn gently and lock tubing into both the inside and outside support clips.



- 6 Moving the ink cartridge holder to the left, adjust the length of the tubing so that it neither impairs printer head movement, nor strikes the printer in the push movement of the printer Head.

Reset cartridges:



The ink will be showed less and less when printing, as the original cartridges. At last ,the computer will tell you to replace cartridge doesn't work. **Keep the power, open the cover of printer, do not need to remove the CIS cartridges** , then press the switch on the cartridge stand for 2 time(or 3 seconds), restart 2 times ok. Some version cartridges are 2 switches design, when need not original cartridge, place '2' position. When '1' position, must need original cartridge

