



For EPN

- 780/790/870/890/895/915 /810/830U/830/925/935
- 1270/1280/1290

- Continuous ink system
- Continuous ink supply system
- Continuous ink flow system
- Continuous ink feed system
- Bulk ink system

Unpacking Instruction

1. CIS ink system (Continuous ink system) 1 Set
2. Pipeline Clincher or Arm Support 1 Set
3. Installation Instruction 1 Copy
4. Syringe 1 Set

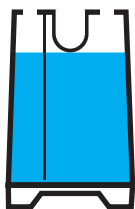
Note

1. Not drinkable, keep it out of the reach of children
2. Avoid exposure to direct sunshine and don't keep it in the high or freezing temperature.
3. Avoid collision and fallen down.
4. Please do not take out the cartridges at random after installing the CIS ink system.
5. Using it in the temperature of 10-40°C
6. The CIS ink system has passed the strict compatible checking, so we suggest to use our ink and cartridges to keep the printing quality.
7. Mix two different brand ink into the CIS ink system is not recommended.

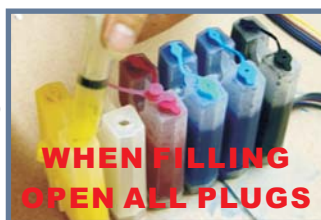
**8. Keep the ink tanks and printer in the same level. Do not place the tanks higher or lower than their printer**

Refilling ink

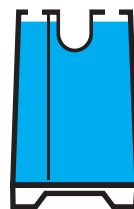
ALL OPEN



FILL INK TO THIS LEVEL  
(Only for reference)



ALL OPEN



FILL INK HIGHT TO FULL  
(No recommend)

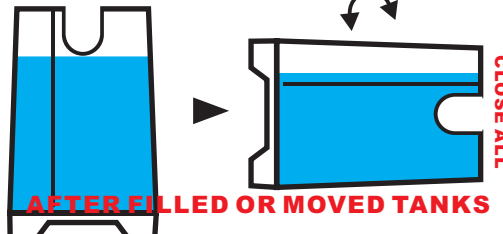
When you want to filling ink, firstly, please pull out the rubber plugs from the fill-hole of the ink tank; use a common syringe to fill ink (please see the step as picture 2); and then, pull out rubber plugs from the CIS cartridge and use a syringe to draw air, pull the syringe position for air-removing (please see the step as picture 3), then the ink will flow into the ink cartridges from the tanks automatically. After filled, you need to stuff all holes with the rubber plugs.

Tanks working :

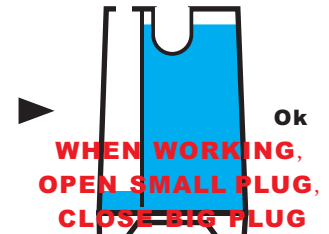
OPEN 1 CLOSE 2



CLOSE ALL



OPEN 1 CLOSE 2



- 1 Press the "ink cartridge replace Button"  
Move the cartridge to the cartridge to cartridge remove position  
Uplug the power connector



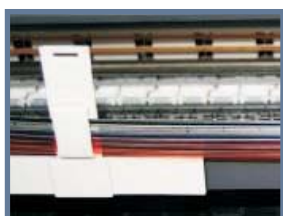
- 2 Remove original cartridges.  
Insert the CIS cartridges into printer carefully.  
Close the cover for cartridges



- 3 Tear off the sticker.  
Fix the arm on the 26cm right far from you printer.  
Tear off the sticker



- 4 Fix the balance arm.  
Tear off the sticker of clamp.  
Attached the clamp on your printer and let it parallel with printer

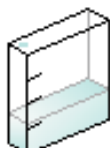


- 5 Insert tubelline through the arm



- 6 Adjust the tubelline,remove the Cartridge-car back and forth.  
Make sure tubline will not meet printer when printing .  
Make sure the length of tubline is enough to reach the far left and right.

Notice for cartridges:



The ink will be showed less and lessr when printing, as the original cartridges.  
The chips for CIS can auto reset when the printer show '0' capacity ink.  
If use for a long time ,the computer tells you to replace cartridge doesn't work,  
**Power off the printer for 1 minute, then restart ok.**